



BASS HIGH SCHOOL

Information Booklet



Table of Contents



Mission statement and school motto	2
Principal's message	2
School information	3
People who can help at school	4
Year 7 transition and Orientation	7
School expectations	8
School bell times and map	12
Mobile Phone, Laptops, Cameras And Other Electronic Devices - School Policy	13
Learning and support	14
Courses and programs	16
Canteen menu	26
School communication	28
School uniform	30

Mission statement and school motto

Bass High is a co-educational comprehensive school established in 1959, proudly serving the communities of Bass Hill, Georges Hall, Villawood and surrounding areas. The school is named after George Bass, the surgeon on the ship "Reliance". Bass was later to explore the Bass Hill area with Flinders travelling up the Georges River in the "Tom Thumb". Students and Staff at Bass High reflect the diverse cultural backgrounds of our community.



"Tibi Confidas"

"Be True to Yourself"

Principal's message

Students at Bass High School are taught and coached by staff dedicated to improving their learning and accessing opportunities that will make a strong difference to their future pathways. Our facilities and classrooms provide students with varied learning environments that foster effective learning.

We have a number of educational and wellbeing programs that will help your children succeed with their learning. These include a whole school reading program for stage 4 students, University literacy partnerships for Years 7 - 9, Rugby League program, partnerships with various community groups such as the Smith Family and Canterbury Bankstown Chamber of Commerce.

We appreciate the trust you demonstrate by placing your precious children into our care and it is our mission to develop them into knowledgeable and respectful members of the community. Our school motto Tibi Confidas highlights our school purpose of assisting our students discover and grow into the best versions of themselves.

I strongly recommend Bass High School to you as your school of choice.

Mr. M. Toaetolu

School information

Address	Arundle Rd, Bass Hill 2197
Contact details	Phone: 9726 3644 Fax: 9724 0523 Email: www.bass-h.schools.nsw.edu.au
Principal	Mr M. Toaetolu
Deputy Principals	Mr T. Dimech & Ms R. Charara
Instructional Leader - Literacy	Ms. B. Virwani
Head Teachers	
English (Rel)	Mr Van der Kley
Mathematics	Mr E. Azar
Science	Mr A. Hadjichari
TAS/Creative Arts (Rel)	Mr A. King
PD/H/PE	Ms H. McGuckin
Human Society & Its Environment (HSIE)	Mr A. Kumar
Learning & Support (LaST)	Ms S. Peake
Adminstration	Ms V. Chan
Welfare (Rel)	Ms T. Trajkovski
School Counsellor	Ms H. Smith and Ms K. Witchard
Special Unit	Ms L. Pfeiffer
Girls Coordinator	Ms M. Hamed
Student Support Officer	Ms Y. Lewis
Aboriginal Education Officer	Ms. K. Leverett
Year 7 2022 Student Advisor	Mr Z. Ali

People who can help at school

Teachers

In the classroom and the playground. You will normally have a different teacher for each subject.

Year Advisor

Each year group has a Year Advisor and an Assistant Advisor. These teachers oversee the welfare of each student and will assist with your child's progress until Year 12.

Head Teacher Welfare

The Head Teacher Welfare provides guidance to all students with needs relating to learning and personal issues. The Head Teacher Welfare communicates with staff and parents/carers regarding issues that surround learning difficulties, health, well-being and behaviour issues of students.

The Counsellor

Ms H Smith and Ms K Witchard are available to confidentially assist with personal or emotional problems.

Learning Support Teacher

Will help you with any difficulties with your child's work in any subject. Their office is located in the Library block. Students are supported in and out of class.

EAL/D Support (English as Additional Language or Dialect) Teacher

Provides support for students for whom English is not their first language.

Coordinator of Girls Education

Develops school and community based programs and workshops that will encourage the development of positive identities for female students. The Coordinator also provides social support to students to reach their full potential not only in the classroom, but also further education, training, work, family and community life.

Student Support Officer

Student Support Officer can assist with:

- identifying support networks for students with staff, the school community and local based government services and community agencies
- assisting students with wellbeing, resilience and pro-social behaviour strategies
- supporting transition between schools and post-school
- facilitating student referrals to local services

The SSO primarily works in partnership with external agencies and the wellbeing team to provide whole-school wellbeing initiatives, group programs and one-on-one support.

Aboriginal Education Officer

Aboriginal Education Officers provide assistance to teachers, Aboriginal students and their families to support improved learning, welfare and well-being outcomes for Aboriginal students.

Who can help me?

What's the problem?	Year Advisor	Class teacher	Head Teacher	Head Teacher Welfare	Deputy Principal	School Office	School Counsellor	Careers Advisor
I have been away from school		✓				✓		
I am late to school/need to leave school early						✓		
I feel sick at school		✓				✓		
I am out of uniform	✓	✓				✓		
I have changed my address/contact phone numbers						✓		
I cannot find my class	✓		✓					
I have not received or lost my student ID	✓							
I have lost something / had something stolen	✓	✓	✓		✓	✓		
I have valuables or money at school						✓		
I have to pay for school contributions, excursions						✓		
I have to take some form of medication at school				✓		✓		
I do not understand something in class	✓	✓	✓					
I have forgotten or do not have my computer log in	✓							
I have not been able to finish an assignment on time or I am going to be away for the due date of a test or assignment	✓	✓	✓					
I want to change subjects		✓	✓					
I want to discuss career planning and pathway options	✓	✓						✓
I believe I am being bullied	✓	✓	✓	✓	✓	✓	✓	✓
I am having some problems with my friends or at home	✓	✓	✓	✓	✓		✓	
I want to try out for a sporting team	✓	✓	✓					
I would like to know about year level and extra curricular activities	✓							
I have an issue that impacts on my physical, mental or sexual health	✓			✓	✓		✓	
I am dealing with things that make it hard for me to come to school	✓			✓	✓		✓	
I want to discuss my progress in class or academic results		✓	✓					

Year 7 Transition



Bass Beginners



At Bass High School we have comprehensive transition programs that focus on easing our prospective Year 7 students into a high school setting. Some of these programs include our *Bass Beginners Days* and our *Ready, Set, Go Program*, which both introduce students to High School in an engaging and informative manner.

The transition between Primary School and High School requires a level of adjustment for all students. The program in Year 7 is designed to limit stress on students and build on the knowledge and skills developed in primary school.

Students are divided into base classes for all subjects and remain in these classes throughout the year excluding Music, Technology Mandatory and Visual Arts. Classes run for 1 hour over a two week cycle.

Students commencing Year 7 will be in Stage 4 for the first two years of high school. This means that many of the subjects offered in Year 8 will be an extension of those studied in Year 7.

Year 7 Orientation Program

Bass High School encourages every student to attend the program to build and develop important social skills as well as skills for life.

A program is run early in the school year. This program is mandatory for students and is used as an orientation activity to support the transition of students from Year 6 into Year 7. This is organised by the Year Advisor and run in conjunction with the schools Welfare Team. Students participate in team building exercises as well as challenging activities aimed at developing trust, cooperation, respect and tolerance.

School Expectations

Ready to Learn

The Ready to Learn (R2L) initiative aims to promote student preparedness to learn, specific to the needs of the students of Bass High School.

The R2L model attempts to promote student learning independence and a focus on:

- Classroom expectations (behavioural)
- Enhancing students awareness of learning through an emphasis on Learning Intentions and Success Criteria



Our Ready to Learn guidelines are detailed on the following page.



Bass High School

READY TO LEARN GUIDELINES

CLASSROOM EXPECTATIONS:

All students are expected to enter their classrooms, ready to learn. The following guidelines are basic expectations of students that will be reinforced by teachers.

ALL STUDENTS MUST:

It is expected that from the commencement of any lesson, ALL students:

- Enter the classroom or other learning space respectfully
- Remove hats/beanies prior to entry into classroom
- Mobile phones off and out of sight prior to entry into classroom
- Remove earphones and place in bags prior to entry into classroom
- Place relevant books and/or equipment on desk
- Place bags on the floor
- Sit on a chair and at a desk and not move without teacher permission
- Write down the lesson's *Learning Intention* and *Success Criteria*
- Follow teacher instructions and maintain respectful behaviour

FAILURE TO COMPLY MAY RESULT IN:

- Warning/Detention
- Parent phone calls/interviews
- Referral to Head Teacher or Deputy Principal
- Intervention program referrals
- School Service
- Pre-suspension or suspension for persistent disobedience

Level System

Bass High School deploys a Welfare and Discipline System to manage student behaviour. The system is managed by the Head Teacher Welfare and Deputy Principals to provide structure and support for those students experiencing difficulty behaving in an appropriate manner. Students placed on this system are given their levels sheet each morning and are required to have it completed by each of their teachers during the day and have it signed by their parent/carer. They then return their sheet the following morning and are issued a new sheet. The system has 2 levels (1 and 2), as well as Faculty Monitoring. Students can be placed on Faculty Monitoring by any Head Teacher for structure and support in relation to learning and behaviour in specific subject areas.

Student Homework Diary

At the start of each school year, every student is issued with a Bass High Student Homework Diary so that each student can keep an accurate record of homework and assignments. This allows students to plan their study and homework schedule appropriately. Students are required to write their homework in their diary during each lesson.

We ask and expect students:

- to bring their Student Homework Diary to every lesson
- to record all homework, assignments, assessments, exams, etc in their diary

We ask and expect parents:

- to check that homework has been written into the diary
- to check that your child crosses it off when it is completed

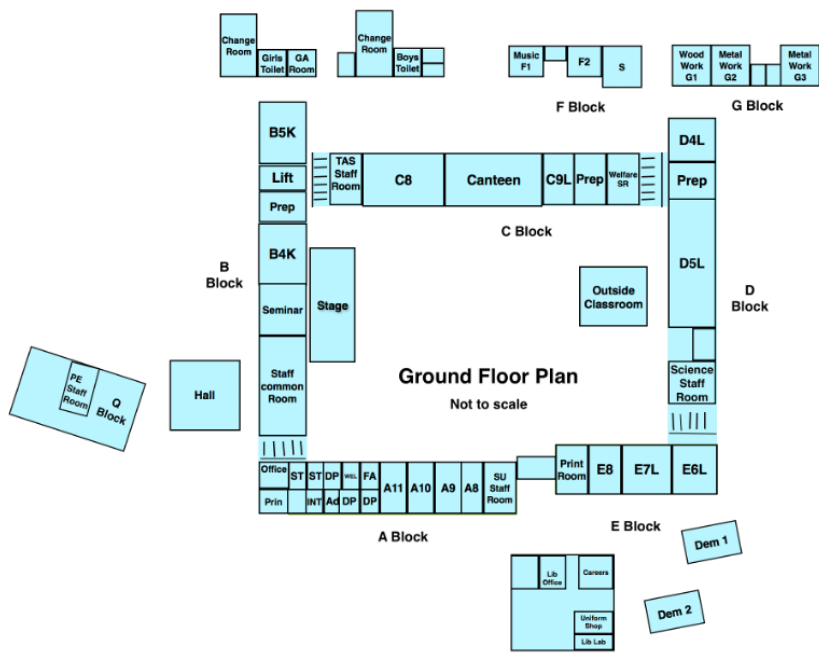
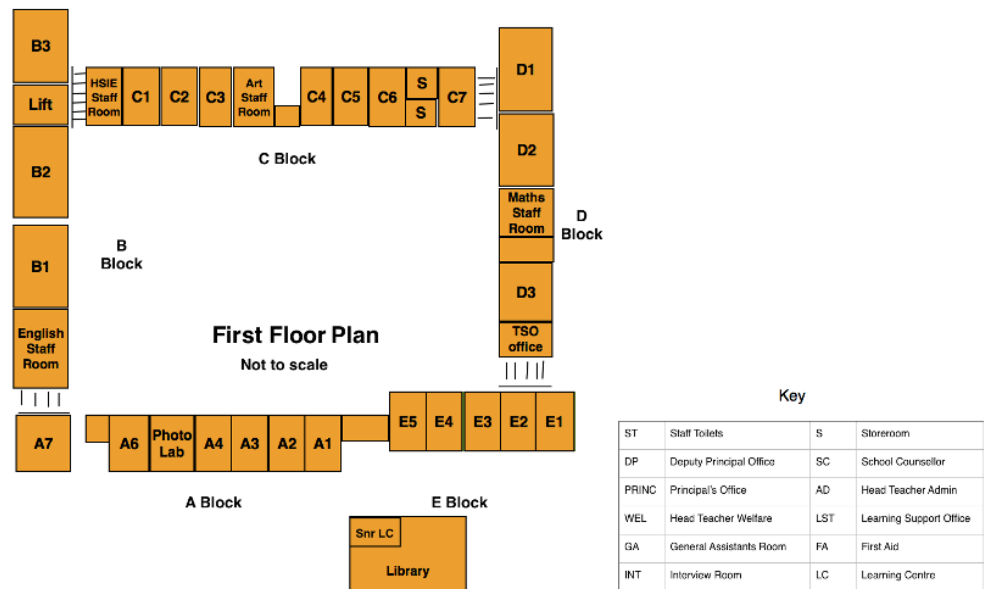
We expect teachers:

- to ensure students write their homework into their diary
- inform parents/caregivers of students who continually fail to do their homework, assignments, etc.

School Bell Times

	Monday	Tuesday	Wednesday	Thursday	Friday
Period 0					
Period 1	9:00am - 10:00am	P1 9:00am - 9:50am	9:00am - 10:00am	9:00am - 10:00am	9:00am - 10:00am
Period 2	10:00am - 11:00am	P2 9:50am - 10:40am	10:00am - 11:00am	10:00am - 11:00am	10:00am - 11:00am
Break 1	11:00am - 11:20am	B1 10:40am - 11:00am	11:00am - 11:20am	11:00am - 11:20am	11:00am - 11:20am
Break 2	11:20am - 11:40am	P3 11:00am - 11:50am	11:20am - 11:40am	11:20am - 11:40am	11:20am - 11:40am
Period 3	11:40am - 12:30pm	B2 11:50am - 12:10pm	11:40am - 12:40pm	11:40am - 12:40pm	11:40am - 12:40pm
Period 4	12:30pm - 1:20pm	B3 12:10pm - 12:30pm	12:40pm - 1:40pm	12:40pm - 1:40pm	12:40pm - 1:40pm <i>Year 11/12 Dismissed at 1:40pm</i>
Break 3	1:20pm - 1:40pm	P4 12:30pm - 1:30pm	1:40pm - 2:00pm	1:40pm - 2:00pm	1:40pm - 2:00pm
Period 5	1:40pm - 2:30pm	P5 1:30pm - 2:30pm	2:00pm - 3:00pm	2:00pm - 3:00pm	2:00pm - 3:00pm
	Staff Meeting 2:30pm - 3:30pm				

School Map



Mobile Phone, Laptops, Cameras And Other Electronic Devices - School Procedures

The increasing sophistication of mobile phone & electronic devices presents a number of issues for schools including:

- the high value of many phones & electronic devices
- camera phones which present potential child protection and safety issues
- the potential to use the phone e.g. for texting whilst on silent mode or inappropriate communications
- the potential disruption to learning that mobile phones and electronic devices can present in classes

The school appreciates the importance of phones to enable students to contact parents when travelling to or from school. **Contact with parents during school hours should be through the front office on 9726 3644. All students must be aware of the rules in using mobile phones and other devices. The following rules apply to mobile phones, laptops, cameras and other electronic devices:**

1. Mobile phones must be switched off (not on silent mode) and out of sight during class time.
2. Phones & electronic devices will be confiscated by a teacher if they are used during class time. Teachers will often provide one warning for a student to switch the phone or device off and put it away.
3. Students are not permitted to use the phone to check the time during class.
4. Phones & electronic devices confiscated will be stored securely at school and parents will be required to collect the phone or electronic device from school.
5. Bullying or harassing others by phone or text is illegal and could result in referral to authorities outside the school.
6. Recording or videoing anywhere on school grounds (including classrooms and playground) is illegal.
7. Downloading or accessing inappropriate material on the internet is illegal.
8. Filming of fights or other behaviour at school or when travelling to or from school is illegal.
9. Posting on the internet or social media (such as Facebook) of videos taken illegally at school will be referred to Police.
10. Mobile phones must not be taken into an examination or used as a calculator or watch during class or examinations.

Learning and Support

Starting High School is an important opportunity to re-assess and strengthen learning skills.

The Learning and Support Team's role is to provide assistance and strategies to help students overcome any obstacle to their learning.

Our Learning and Support Team identifies and plans within the school's priorities for provision of services to students with identified/additional learning needs.

The team develops Personalised Learning and Support Plans and Personal Learning Pathways in collaboration with parents and carers.

A broad range of specific programs are run to address individual learning needs. Some of these include:

- Numeracy
- Skills revision
- BLAST Reading and Comprehension Program
- Guided reading and writing skills programs
- Group comprehension and reading enhancement
- NAPLAN guidance and preparation
- Multi-Lit
- Best Start Year 7 assessment and data analysis
- NAPLAN online assessment
- National Minimum Standards testing and preparation tutoring
- Our team of dynamic and professional mainstream student support officers provide in-class support, deliver withdrawal programs and help to administer learning support operations.

The Learning and Support Team works closely with individual students to help them achieve their targeted educational goals. Students are supported in and out of class.

Numeracy Support Program

At Bass High School, Learning and Support offers Mathematics and Numeracy support for junior mainstream students (Years 7-10) that present with learning difficulties.

Support can be provided in 3 main ways:

- **Numeracy+ program**

Intensive support for students with a Personalised Learning and Support plan.

The program focuses on:

- Building basic mathematical skills using MathsOnline (K-6 component).
- Development of numeracy skills by exposing students to past NAPLAN questions.

- **Class support**

Learning and Support teachers and School Learning Support Officers offer support to students during their Mathematics lessons. The focus is on building fundamental skills and assisting students with concepts taught in class.



Courses and programs

Wellbeing at Bass High School

Bass High School has a comprehensive Wellbeing Program in place that was developed by our school Welfare Team. We acknowledge that effective learning is highly influenced by wellbeing. Student disengagement in learning can be the result of many psychological, social and environmental circumstances which warrant the need for strong and targeted wellbeing programs. Such programs will strengthen our school's approach to the social and academic development of our students.

Wellbeing lessons at Bass High School are embedded into the student timetable in Years 7 – 10 and are taught by the Year Advisors. Some focus areas of the lessons include: Being Mentally Healthy, Goal Setting, Social Skills, Positive Relationships, Resilience and Anti-Bullying. Students in Years 11 and 12 also partake in Wellbeing initiatives, at least once per school term. Some focus areas for the senior students include stress, anxiety and study skills. The success of Bass high School's Wellbeing Program has been recognised with a Secretary's Award for an Outstanding School Initiative by the NSW Public Education Foundation.



Literacy Support Program

Literacy lessons teach and encourage all year 7 students the importance of reading through a variety of programs. Challenge is also a mechanism for the identification of students with reading difficulties for referral to remedial reading programs. Lessons are also utilised for the development of information literacy skills using computers and search strategies with which to undertake research for general study and assessment tasks.

The Accelerated Reading Program

To further develop their literacy skills, all students in Years 7 and 8 engage in a whole school Reading programme called Accelerated Reader. This is a program that helps teachers to support and monitor student reading practice. Students pick a book from the library at their own level and read at their own pace. When finished, the student is directed to take a short online quiz to measure their comprehension skills.

Every student in Years 7 and 8 reads every day for 20 minutes to strengthen their reading and comprehension skills. This program is closely monitored and any issues with not following the guidelines has consequences and results in phone calls home and warning letters.

Students can select books from over 40,000 books. These can be found in the school library as well as public libraries, bookshops etc.

Parents can help in supporting this program by:

- Encouraging their child to read at home. This additional time besides the time in school will help them in improving their reading ability.
- Discuss books and asks questions about what they have read and visit your local library with your child.

NSW Equity Consortium Project

Our students in Years 7 to 9 are participating in the NSW Equity Consortium Project that runs for five years. The NSW Equity Consortium is a voluntary partnership between three Sydney universities (UNSW, Macquarie University and University of Technology Sydney) who are currently engaged in school partnerships that build student and school capacity for university pathways. It is a research-informed literacy intervention outreach program with the whole cohort that has lessons designed and delivered by the three universities.



The focus of this program is to implement differentiated literacy intervention based on three micro-literacy skills, identified from the school's NAPLAN data. The program further contributes to students' expanded understandings of post-school options and their capacity to navigate tertiary education pathways. The project also develops and enhances collaborative networks by creating a community of inquiry to share and refine innovative teaching and learning practices, strategies and resources.

Currently, our Year 9 students are working with UNSW and are engaged in this project. Year 8 will work with UTS in Term 2 and Year 7 with Macquarie University in Term 3.



Mathematics Enrichment Program



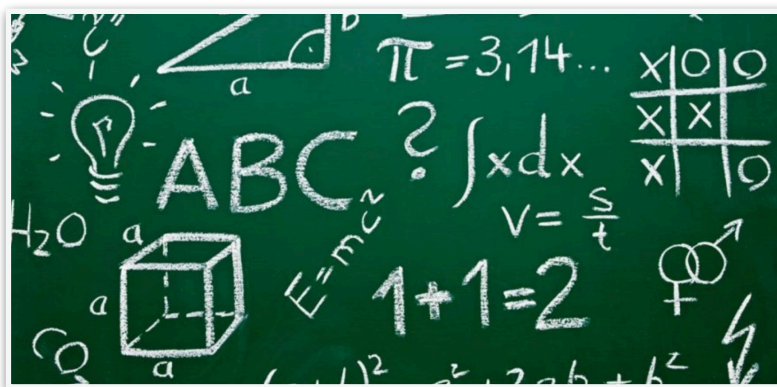
The Mathematics department at Bass High School is offering students in Year 7 to 10 the opportunity to participate in an Enrichment Program designed for talented students.

Talented students are those with skills distinctly above average. These students learn quickly, have an excellent memory and can think at an abstract level. They are highly motivated and organised.

Students are selected to participate in the Mathematics Enrichment Class by their classroom teacher.

The aim of the Mathematics Enrichment Class is to offer opportunities to further develop and enhance the skills already possessed. Students will be accelerated; this will allow them to progress through their learning at a faster pace.

Please note that the Mathematics Enrichment Class at Bass High School is an independent program and **not** a part of the Selective Schools Enrolment Program. This program is also external to their regular maths classes.

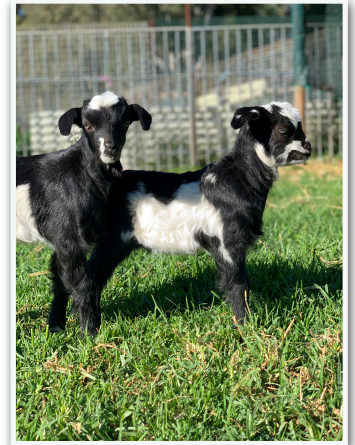


Agriculture and the Farm

At Bass High School we have a flourishing farm which houses many types of animals and produces food and fibre which is cared for and grown by our students.

The study of Agriculture at the school farm allows students to:

- Learn about animal production and plant production, beekeeping and horticulture.
- Do vegetable gardening, and understand the basics of animal husbandry through independent and group learning projects involving sheep, chickens and goats. The course is science-based which offers students the opportunity to explore the production of the food we eat and the fibre we wear.



Students find the course relevant to their lives and many see a future in it. With the world needing to roughly double food production by 2050, many Bass students can continue their Agricultural studies at TAFE, University and within the workforce.



The Rugby League Program

The Rugby League Program is open to all students at Bass High. The students train before school several mornings a week. Later in the term students can trial for either the Open Boys, U14 Boys or Open Girls Rugby League teams. There are regular competitions throughout the year for these teams and later in the year there are opportunities for being involved in “All Age” teams.

Bass High has a fully equipped gym available to all students and it is used extensively by the students in the Rugby League program.

The Rugby League program is a highly successful program where Bass High teams have won eight State Titles across all teams (Boys Open, Boys 14s and Girls Open) in the last five years.

Through the Rugby League program there are 7 male ex-students playing who have played or, are currently playing in First Grade in the NRL and 3 female ex-students in the NRLW league.



Buckley Shield (14s and under) State Champions



University Shield (Open Boys) State Champions



All Schools (Girls) State Champions

Homework Centre

Bass High School offers an after school Homework Centre for its students where qualified teachers support students in their learning needs. The Centre's program offers students a supervised facility where they can complete their homework, research and assignments. Additionally, a range of workshops that assist students to further develop vital skills needed in their learning. These include research, information decoding skills, literacy and numeracy skills.



The Homework Centre operates in the school's library to provide students with a safe, interruption-free and supportive learning environment at no additional cost.

The Homework Centre is open:	Tuesdays:	2:30 – 4:00 pm
	Wednesdays:	3:00 – 4:30 pm
	Thursdays:	3:00 – 4:30 pm

Debating

Bass High offers the opportunity to join debating teams from Years 7 to 12. Students engage in rigorous debate with teams from other schools on areas surrounding education, society, media and the community in the yearly Premier's Debating Challenge. Our debating students love working as a team and developing their public speaking skills.



School Leadership and the SRC

Bass High School offers many leadership opportunities for students including being a member of the Student Represent Council (SRC) from Years 7 to 12, and becoming a School Captain in Year 12. Students help run charity fundraisers, lead projects to improve areas within the school, give a voice to their cohort and are given opportunities to further develop their leadership and communication skills through attending seminars and workshops. SRC and School Captains represent the school at internal and external events and are excellent role models for all students.



Vivo Rewards

Vivo is an online rewards system used at Bass High School where teachers award pupils Vivos (electronic points) for positive behaviour and learning achievements. Students save and spend their Vivos on the rewards they want from an online catalogue where they can buy E-vouchers, gadgets and more. Every student receives their own Vivo account and can download the Vivo Miles app to check their points.

How it works



Bass Media Crew

Founded in 2020, the Bass Media Crew is an opportunity for students to participate in the production process of creating videos and photography of current events and celebrations across the school community. Students plan, film and edit using a variety of professional equipment and software.



Students grow their ICT skills through working in a team environment to operate filming equipment. They produce videos and promotional materials for events in the school. In 2020, students participated in the live streaming of events and got to have hands on experience producing videos that are shared with the school community. They will also enter into short film competitions and create videos for our school's Facebook page.

Mock Trials

Mock Trials is a renowned competition that provides opportunities for students to experience and learn the NSW judicial system. This is a competition where both private and public schools compete against each other. It offers students with practical experiences to run a court case to improve their debating and problem solving skills.



Bass Cafe

Students at Bass High run a school cafe catering to staff, students and community groups. Students participate in training sessions in beverage preparation, customer service and business operations and volunteer to form crews that complete service periods in the cafe on a daily basis during breaks 1 and 2.

A range of skills are being developed by the individual students including:

- Customer service
- Coffee and beverage preparation
- Team work and task management
- Accounting and stock control
- Public speaking
- Media and business promotion.



As students have become more confident in their individual skills they have begun to train and mentor other students. This has been particularly pleasing. There have been more than 90 students involved in Bass cafe since 2015 and there are currently 10 students actively involved in 2021. Income generated by the cafe is used to develop the cafe facilities, support charity fundraisers and reward students with relevant training and educational experiences. Students are currently planning for implementation of future cosmetic and branding improvements to the Bass Cafe space. The future of the cafe will be centred on student outcomes and needs with a focus on delivering a valuable service to the Bass High School community.




Breakfast Club


Bass High's Breakfast Club "Spilling Tea" is a student-run initiative that provides all Bass High students with a delicious morning breakfast on Tuesdays and Thursdays before school. The menu includes cheese toasties, fresh fruit, cereal bowls and juice. Students love visiting in the morning to fill up, have a chat with their friends, and start the day on a positive note.



Canteen Menu – Bonappetit Catering (sample menu- subject to change)



CANTEEN CUISINE Bass High School Menu

<p>BREAKFAST IS AVAILABLE EVERYDAY FROM 7AM TIL 8.45AM</p> <p>Oregano Pizza \$3.00 Cheese Pizza \$4.50 Meat Pizza \$4.50 Toasted Sandwiches Cheese \$3.00 Cheese & Ham \$3.50 Cheese & Tomato \$3.50 Ham, Cheese & Tomato \$4.00</p> <p>HOT DRINKS</p> <p>Small Hot Choc \$3.00 Large Hot Choc \$4.00 Small Coffee \$3.00 Large Coffee \$4.00 Small Tea \$2.50 Large Tea \$3.50</p> <p><i>(note: Cappuccinos, latte, flat white, & mocha available)</i></p> <p>FRUIT & HEALTHY</p> <p>SNACK</p> <p>Fruit Salad \$4.00 Yogurt & Muesli \$3.00 Carrot & Humous \$2.50</p>	<p>SANDWICHES</p> <p>Cheese & Salad \$4.00 Tuna, Lettuce, Mayo \$4.00 Ham, cheese, lettuce & tomato \$4.00 Curry egg & lett/Mayo \$4.00 Chicken Lett/Mayo \$4.00</p> <p><i>we will be also introducing a selection of gourmet rolls and wraps from \$5.00</i></p> <p>WRAPS</p> <p>Sweet Chilli Chicken Tender & Salad \$5.00 Falafel (vegetarian) with salad \$5.00 Tuna & Salad \$5.00 Cheese & Salad \$5.00 Kofta Roll with Humous & Salad \$5.00</p> <p>SALAD PACKS</p> <p>Pasta Salad \$4.00 Tuna Pasta Salad \$4.00 Greek Salad \$5.00 Chicken Salad \$5.00 Chicken Caesar \$6.00 Chicken Basil Penne \$5.00 Asian Noodle Salad \$5.00</p>	<p>Daily Meal Specials from \$5.00</p> <p>Pasta Bolognese Butter Chicken /Boiled rice Stir fry Hoklo Noodles Rice & Chicken Chicken Fettuccine Beef Lasagna & Garlic Bread Kofta Balls ,Potato & Rice Ravioli with red sauce Tortellini with white sauce Curry Chicken with boiled rice Chicken Focaccia Beef Kebab Chicken Kebabs Chicken shish Tawook Kebab</p> <p>There will be a variety of Two meals per day available from \$5.00 each</p> <p><i>pre order your recess & lunch so you don't miss out on your favourite food</i></p> <p><i>Just come in and speak with our friendly canteen staff</i></p> <p>Halal Food Available</p> 	<p>HOT FOOD</p> <p>Chicken Burger with lettuce, tom & Mayo \$5.00 Grilled Chicken Breast Burger with sweet chilli \$5.50 Spicy Chicken burger with Cheese, lett & tom \$5.50 Chicken Schnitzel roll with Lettuce & Mayo \$4.50 Potato wedges \$4.00 Spring Rolls \$4.00 Chicken Chippies \$4.00 Popcorn Chicken \$4.00 Chicken Kebab stick \$3.50 Beef Lasagna \$5.00 Macaroni & Cheese \$4.50 Chicken hot dog \$3.50 Beef Cheese Burger \$4.50 Special Beef burger \$5.50 Sausage Roll \$3.00 Beef Meat Pie \$4.00 Potato Pie \$4.50 Mini Party Pie \$1.00 Garlic Bread \$1.00 Hash Brown \$1.50 Noodle cups \$3.00</p> <p><i>All food is oven baked</i></p>	<p>COLD DRINKS</p> <p>Spring Water \$2.00 Popper juice box \$2.00 Sugar Free Cans \$3.00 Flavoured Milk 300ml \$3.00 Flavoured Milk 600ml \$4.50 LA Maxi Ice \$3.50 Waterfords \$3.50 Lipton Ice Tea \$4.00 Aloe Vera \$4.00 Powerade Zero \$4.00 Apple/Orange Juice Bottle \$3.50 Sugar Free Slushy \$2.50</p> <p>ICE CREAM</p> <p>Zopper Popper \$1.00 Frozen Juice Cup \$1.50 Icy Poles \$2.00 Life Saver \$2.50 Frozen Yogurt Cups \$3.00</p> <p>SNACKS</p> <p>Assorted Chips from \$1.50 Jelly Cup \$1.50 Jelly & Custard Cup \$2.00 98% fat free Muffin \$4.00 Banana Bread \$3.00</p>
---	--	--	--	--

School Communication

Messaging Parents

At times, the school may need to message parents via SMS, for example if your child is absent from school, or of pending school events. It is essential that a mobile phone number be provided to the school for this purpose.

Bass High Facebook Page

To keep yourself updated on all of the great things happening in the wider community at Bass High please like and share our Facebook page at <https://www.facebook.com/basshighschoolpage>



School Website - www.bass-h.schools.nsw.edu.au

Provides a variety of information including news and calendar events.

P & C Meetings

We hold regular monthly meetings at school, with both day & evening meetings. Details will be available on the school website. The P&C needs ALL parents to participate in school improvement.

Parent/Teacher Evenings

Parent /Teacher Evenings are arranged for parents to discuss results and progress with class teachers. This is when half yearly reports are distributed and is an excellent opportunity for both parents and teachers to discuss your child's education. The night is run during Term 2 and you will be notified in advance so that you can keep the night free.

Medical Appointments

Appointments, where possible, should be made before or after school. In the case of a student having to leave school early for a Doctors appointment they must bring a note from home, and place in the Early Leave box at the front office before 9.00 am. They are to collect their authorised note from the front office at recess. Sport days are part of the school curriculum, please do not make appointments on Tuesday mornings unless there is an emergency, **a medical certificate will need to be provided.**

Contacting students during the day

Parents **should not contact their child via their mobile phone during the school day**, but instead contact the school office. If your child is sick and is to be sent home they will be directed to the school office so the office staff can contact you. Students are not to contact their parents themselves. **Parents should not respond to calls made by the student by coming up to the school.**

You are asked to....

- Telephone the school if your child is absent
- Send your child with an explanatory note on the first day back after an absence or reply to the SMS message with an explanation.
- Participate in parent information nights, parent/teacher nights etc
- Respond promptly with payments, costs for excursions, camps etc
- Regularly check your child's school diary and the school website.
- Not to contact your child on their mobile. Please contact the school office if urgent.
- Make appointments for your child outside of school hours

School Uniform

Students at Bass High School are expected to wear full school uniform. This decision is supported by the Bass High Parents and Citizens Association and by the school community. The wearing of school uniform:

- Advances strong community pride
- Promotes a positive school spirit and sense of belonging
- Develops feelings of pride in your school
- Affirms a safe and happy school
- Assists in the recognition of students and,
- Satisfies Health and Safety requirements

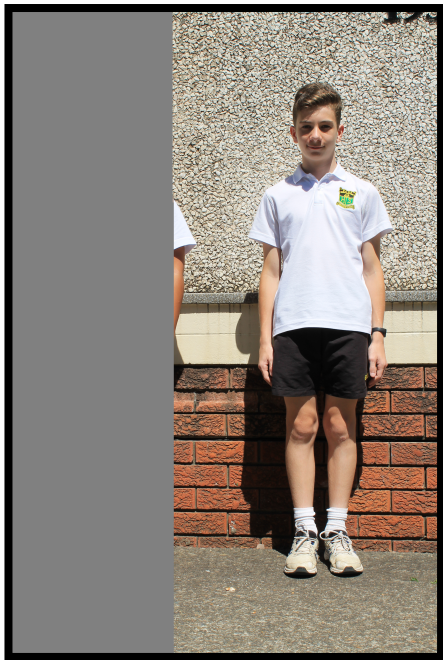
A school's reputation is enhanced by the image that is portrayed by students as they interact with the wider community. Students of Bass High School are expected to be in full school uniform whilst travelling to and from school. Students will also be required to wear full school uniform when representing the school or when on school excursions. Parents will be notified of exceptions to this rule.

PE Uniform is only to be worn to school on sport days and if your child has PE first period. Students are to wear their normal school uniform on all other days and change into their PE uniform for that class only. School uniform items are now available only at school from the Bass High uniform shop.

Bass High School Uniform Shop Opening Hours - Located in school library

- Parents by appointment Monday and Tuesday's.
- Students can visit the Uniform Shop during break times. Monday and Tuesday's.

Uniform		
Girls	Junior	<ul style="list-style-type: none"> - White short sleeve blouse with logo - Green check short/long skirt - Black straight leg pants - Bottle green knit jumper with logo - School tie (optional) - Plain white socks - Enclosed black leather shoes - Hijab (black, grey or white)
Boys	Junior	<ul style="list-style-type: none"> - White short sleeve shirt with logo - Grey shorts - Grey pants - Bottle green knit jumper with logo - Plain white socks - Enclosed black leather shoes
Sport	Unisex	<ul style="list-style-type: none"> - Sport white polo shirt with logo - Sport black shorts with logo - Sport black long pants
Extras	Unisex	<ul style="list-style-type: none"> - (Year 7-10 each Tuesday) - Soft Shell Jacket, Hat,





Unisex sport uniform



Junior boys and girls uniform



Samples of Acceptable and Non acceptable school shoes to be worn by students

✓					
X	